

FEEDING DEVELOPMENT

0 to 3 months:

- Movement: Pre-crawling stage
- Motor: Flexion
- Jaw: Phasic Bite
- Lips: Seals; Functions as a unit with tongue, cheeks, and palate
- Tongue: Cups
- Utensil: Breast or Bottle

3 to 6 months:

- Movement: Pre-crawling stage
- Motor: Rolling
- Jaw: Phasic Bite; Emerging munch chew
- Lips: Seals; Functions as a unit with tongue, cheeks, and palate; Emerging active lip movements
- Tongue: Protrusion and Retraction
- Utensil: Breast or Bottle

6 to 9 months:

- Movement: Pre-crawling stage
- Motor: Sitting
- Jaw: Munch chew transitions to diagonal chew
- Lips: Active lip movements; Emerging stripping food from the spoon
- Tongue: Lateralization
- Utensil: Breast or Bottle; Spoon and Cup

9 to 12 months:

- Movement: Crawling stage
- Motor: Standing
- Jaw: Controlled/sustained bite of soft, solid food using a circular rotary chew
- Lips: Stripping food from the spoon with improved lip closure
- Tongue: n/a
- Utensil: Breast or Bottle; Spoon and Cup

12 to 18 months:

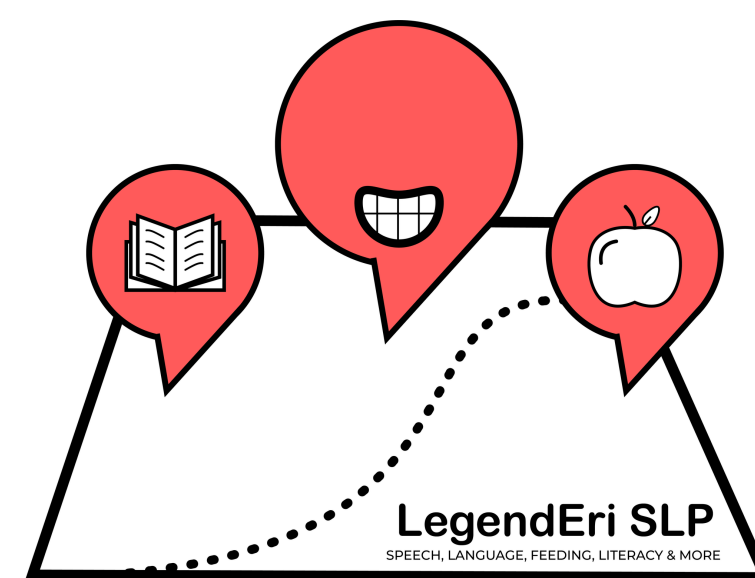
- Movement: Ambulatory
- Motor: Walking
- Jaw: Controlled/sustained bite of soft, solid food using a circular rotary chew
- Lips: Stripping food from the spoon with improved lip closure
- Tongue: Jaw-Lip-Tongue dissociation
- Utensil: Straw

18 to 24 months:

- Movement: Ambulatory
- Motor: Running
- Jaw: Controlled/sustained bite of hard, solid food using a circular rotary chew
- Lips: Stripping food from the spoon with improved lip closure
- Tongue: Sweeps food from lips
- Utensil: Straw and Fork

24 to 36 months:

- Movement: Ambulatory
- Motor: Jumping
- Jaw: Controlled/sustained bite of hard, solid food using a circular rotary chew
- Lips: Chews with lips closed
- Tongue: Tongue tip elevation during swallow
- Utensil: Fork



516-204-2388

LegendEri.SLP@gmail.com

www.LegendEriSLP.com

@LegendEri.SLP