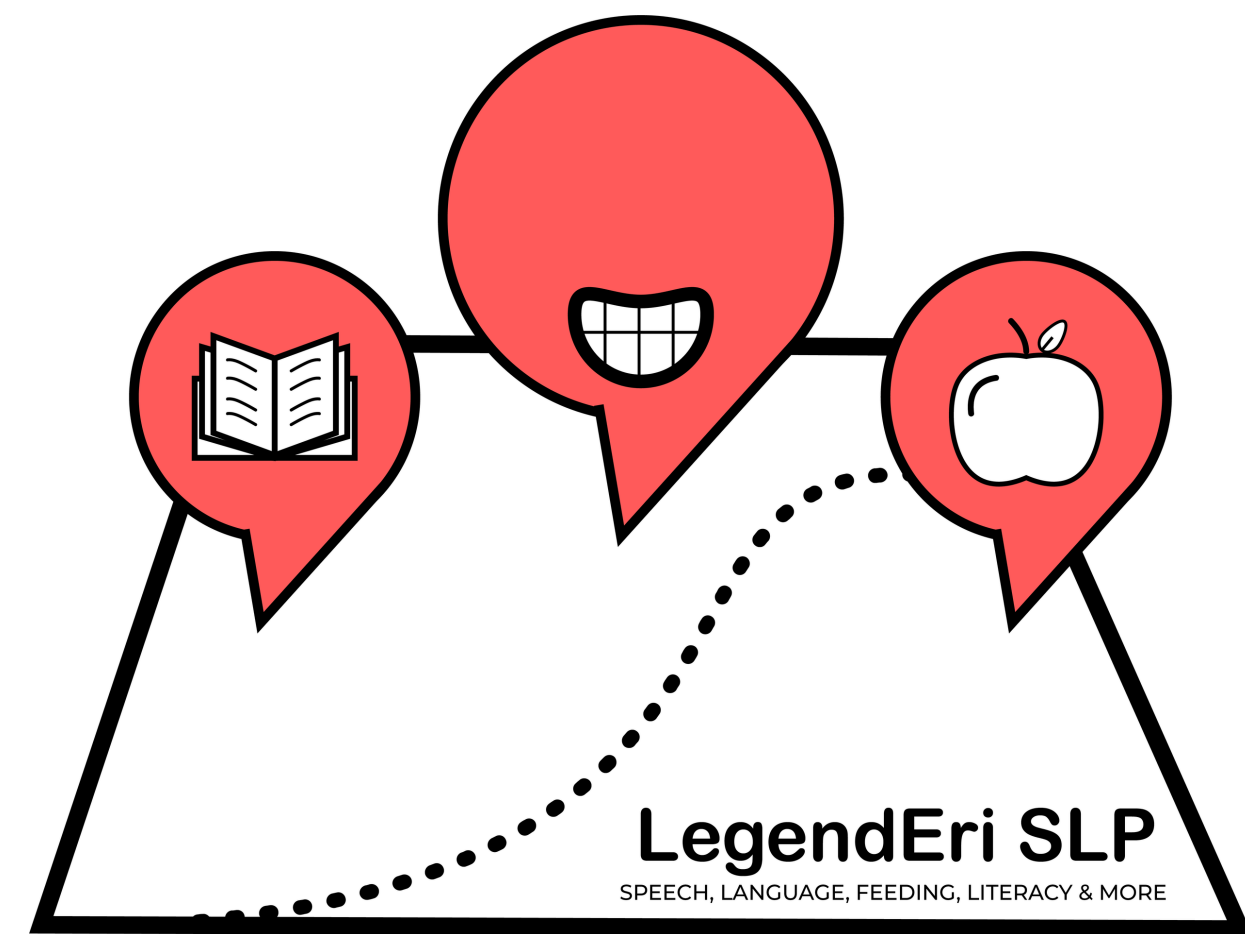
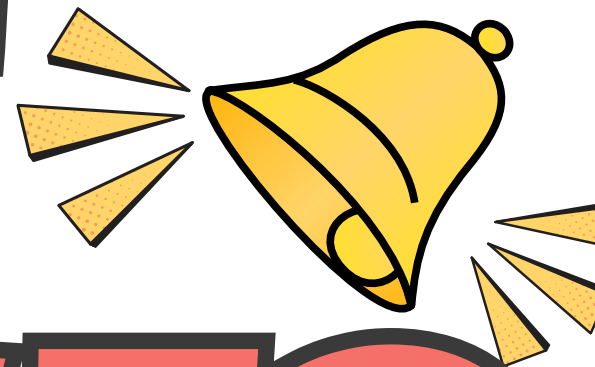


WHAT IS THE BELL CURVE?



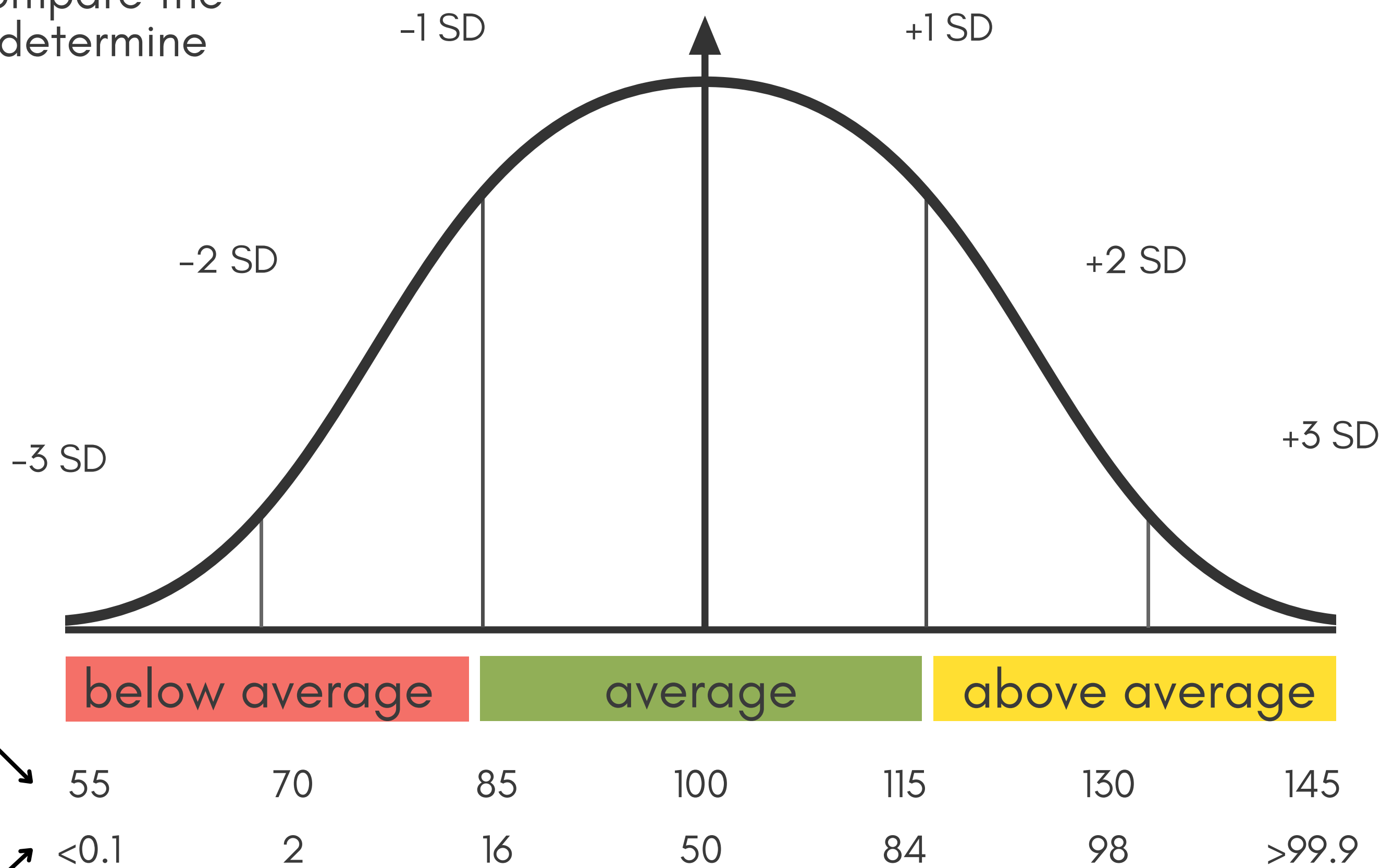
The bell curve shows a student's **standard scores** and **percentile ranks**. These scores compare the student to same-aged peers and help determine the need for special education.

Standard deviation (SD) tells you how far the scores are from the average (mean).

Standard scores (SS) have a mean of 100.

- An *average* score is between 85 and 115.
- A *below average* score is under 85.
- An *above average* score is over 115.

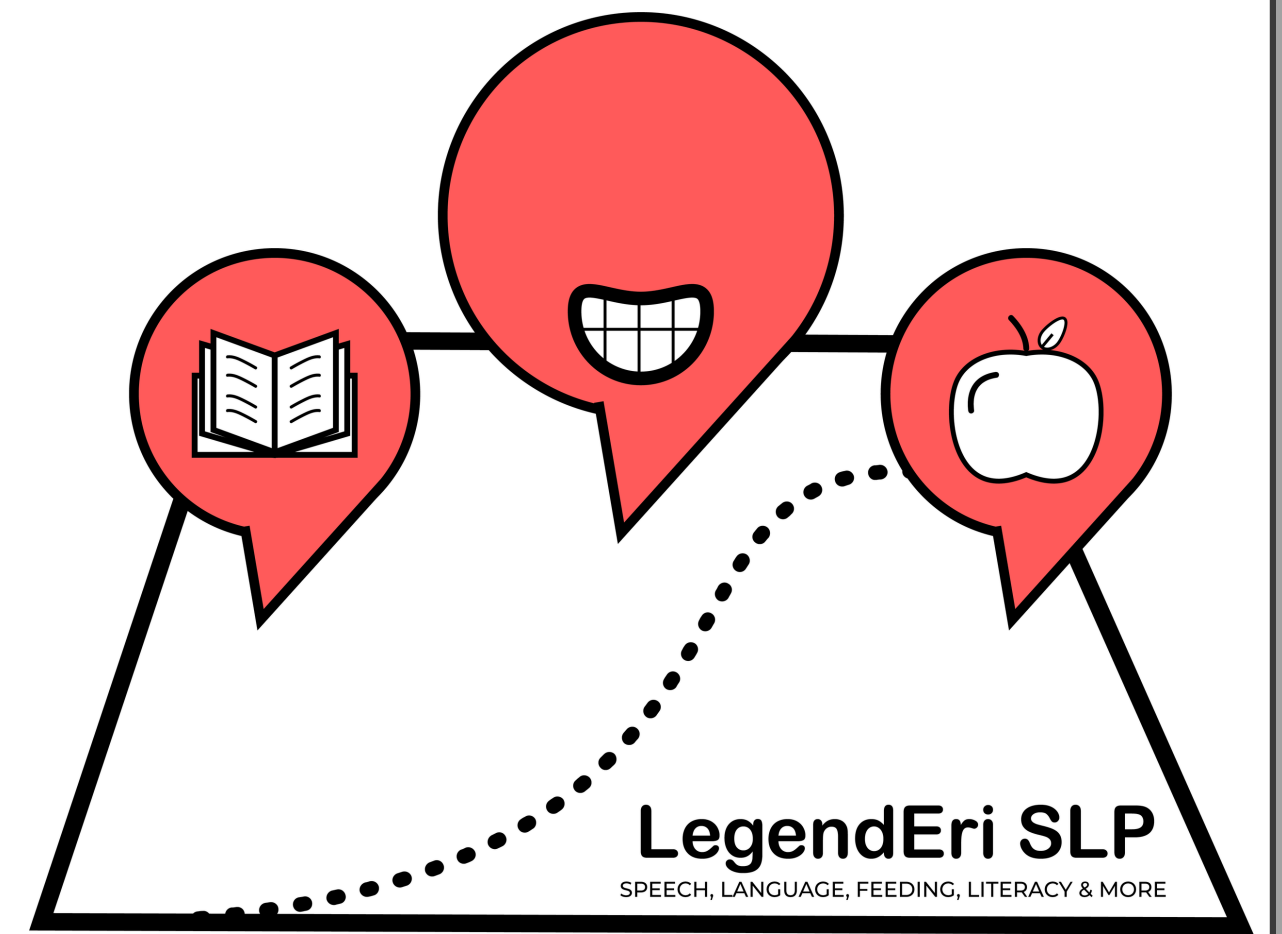
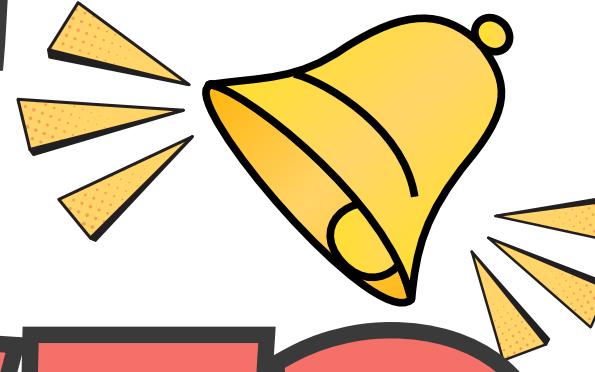
The **percentile rank** has a mean of 50 and indicates the percentage of children who scored lower than the student.



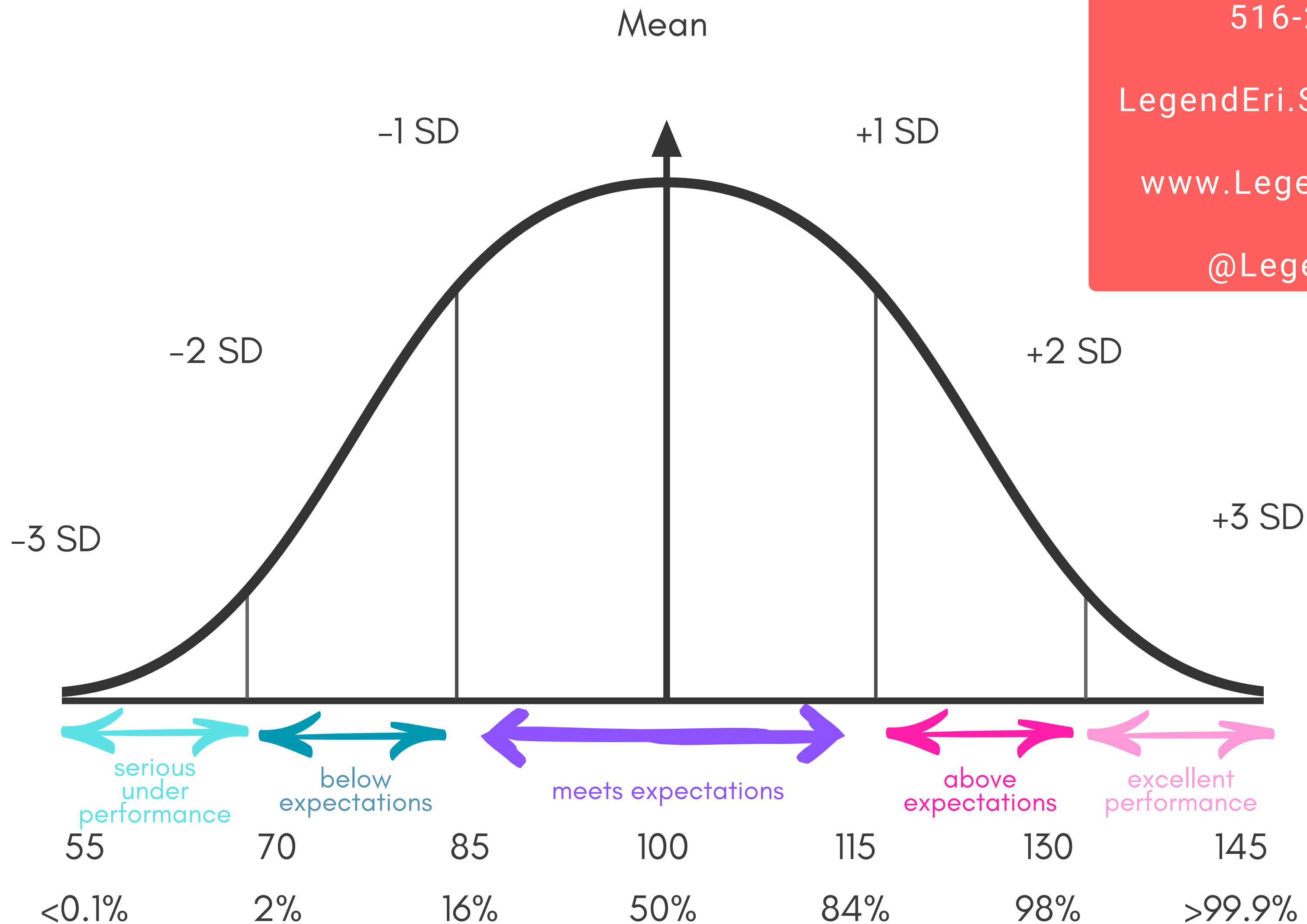
below average average above average

A student who achieves a standard score of 85 and a percentile rank of 16 scored higher than approximately 16% of same-aged peers. About 84% of peers scored higher than the student. This score falls in the low-average range and is 1 standard deviation from the mean.

WHAT IS THE BELL CURVE?



Let's take a closer look:



516-204-2388
LegendEri.SLP@gmail.com
www.LegendEriSLP.com
@LegendEri.SLP